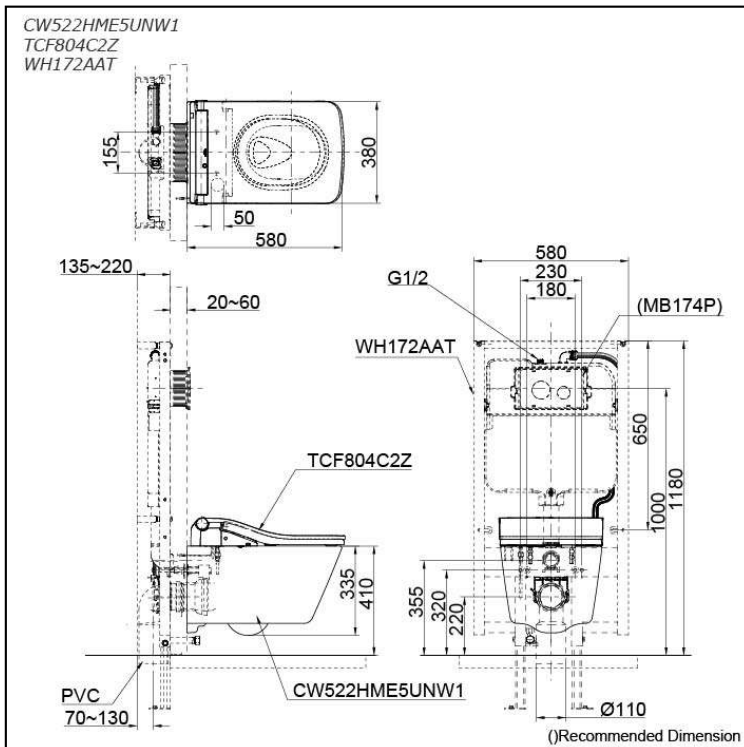


WALL HUNG TOILET with
WASHLET SW



Features

- CEFIONTECT Technology: super smooth, ion barrier glazing for a clean toilet bowl
- TORNADO FLUSH for powerful flushing with less amount of water
- RIMLESS DESIGN bowl ensures easy cleaning and ultimate hygiene
- EWATER+ keeps nozzle and bowl clean with sanitizing effect against bacteria
- Fully equipped with rear, front and oscillating & pulsating cleansing function
- Temperature control HEATED SEAT
- PREMIST a fine spray of mist making it difficult for dirt to adhere
- Auto lid opening and closing

EWATER+ is made from tap water by electrolyzed chloride ion. After use, it returns back to ordinary state of water

Specifications

BOWL:

- Flush System: TORNADO FLUSH
- Water Use: 4.5L / 3L
- Rough-in: H=220
- Bowl Shape: Square Shape
- Water Pressure: 0.05MPa~0.75MPa
- Size: 380W x 580D x 335H mm

WASHLET:

- Power Rating: 220~240V , 50/60Hz , 826~837W
- Length of Power Cord: 0.9 m
- Size: 383W x 579D x 108H mm

Parts description

Stop Valve is included.

- **CW522HME5UNW1**
Square Shape Wall Hung Closet Bowl (P-Trap) with Concealed feature, hiding all wiring inside the bowl
- **TCF804C2Z**
Concealed WASHLET SW (Auto Flush)
- **WH172AAT**
Concealed Tank (4.5L / 3L)

Optional Parts

- MB174P
Flush Panel

NOTE

- **DO NOT COUPLE THIS WC WITH FLUSH VALVE**

Colors

White